

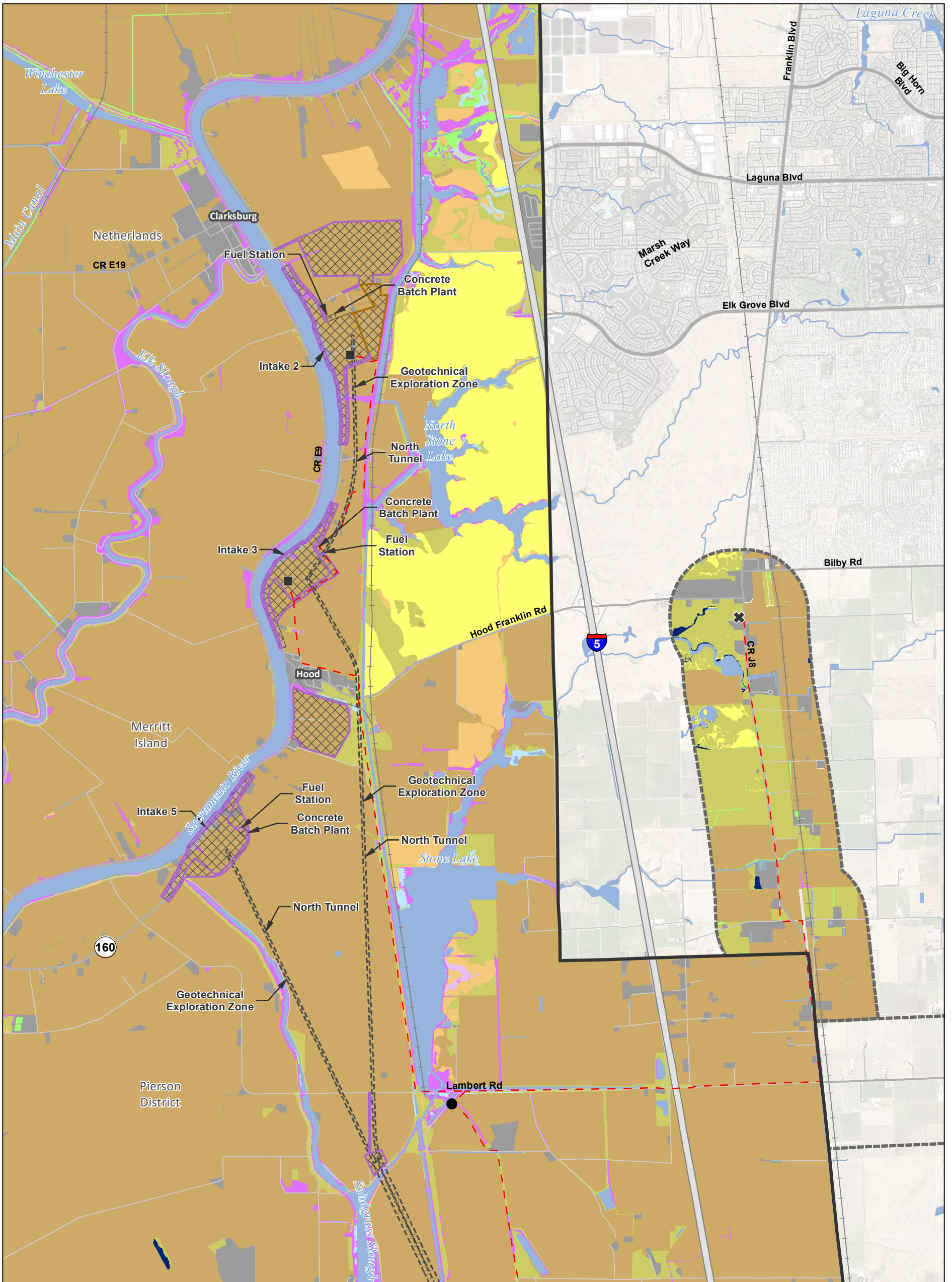
S:\RDEIR_EIS_RecircAppendix_Mapbooks\REIS_Mapbook_48k_Index_SDE_10_5.mxd 2018523

Legend Interstate State Highway/Route Railroad Plan Area Areas of Additional Analysis (Outside of Legal Delta; for Power Only) Water		Proposed Power Substation Capacitor Bank Substation Interconnection Point Proposed Power Permanent OH Transmission Line Temporary OH Transmission Line		Conveyance Construction Footprint Permanent Subsurface Impact Temporary Surface Impact Geotechnical Exploration Zone Work Area Other Permanent Surface Impact Canal Reusable Tunnel Material Area Other		
		*Surface impacts are not expected to result from subsurface features. **In-river features are not a permanent impact to navigation.				

Sources: DWR CWF Engineering (rev 1e 2018); NAIP 2016

Figure M12-4: Index Distribution of Natural Communities – Proposed Project

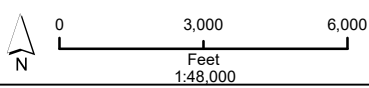
DRAFT: 29 May 2018



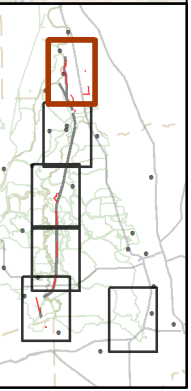
Refer to mapbook index page for conveyance construction footprint symbology

Legend

- | | | |
|-----------------------------------|--|--------------------------------|
| Tidal Perennial Aquatic | Nontidal Perennial Aquatic | Other Natural Seasonal Wetland |
| Tidal Brackish Emergent Wetland | Nontidal Freshwater Perennial Emergent Wetland | Grassland |
| Tidal Freshwater Emergent Wetland | Alkali Seasonal Wetland Complex | Inland Dune Scrub |
| Valley/Foothill Riparian | Vernal Pool Complex | Cultivated Land |
| | Managed Wetland | Developed |



*Surface impacts are not expected to result from subsurface features. **In-river features are not a permanent impact to navigation.

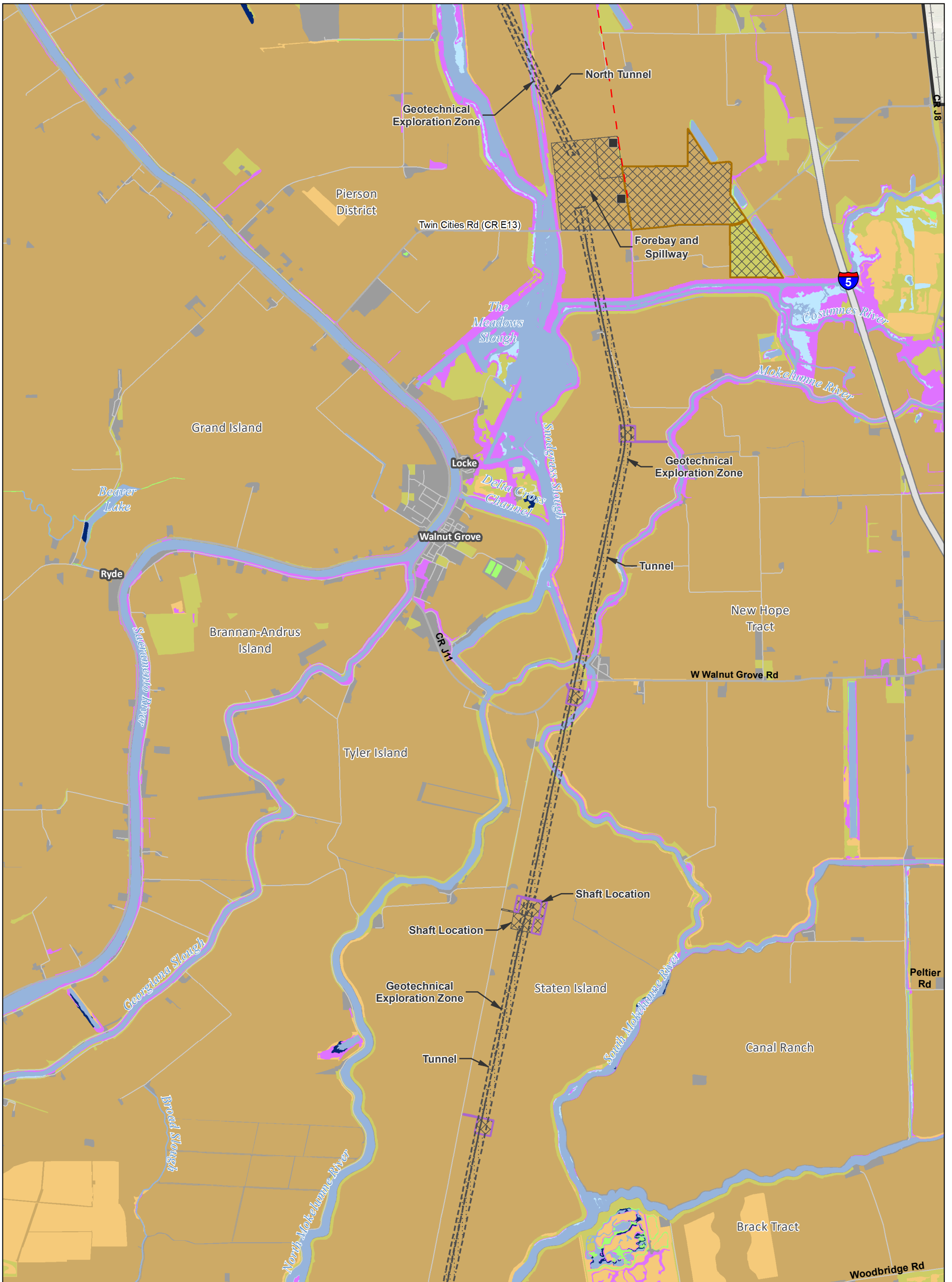




S:\RDEIR_EIS_Recirc\Appendix_Mapbooks\EIREIS_BTf_48K_Mapbook_SDE.mxd 2018529

Sources: DWR CWF Engineering (rev 1e 2018); NAIP 2016); Natural Communities, ICF 2018

**Figure M12-4: Sheet 1 of 6
Distribution of Natural Communities — Proposed Project**














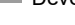
DRAFT: 29 May 2018

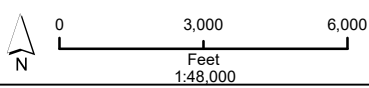


Refer to mapbook index page for conveyance construction footprint symbology  

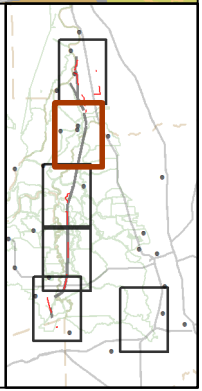
Legend

Natural Community

- | | | |
|---|--|--|
|  Tidal Perennial Aquatic |  Nontidal Perennial Aquatic |  Other Natural Seasonal Wetland |
|  Tidal Brackish Emergent Wetland |  Nontidal Freshwater Perennial Emergent Wetland |  Grassland |
|  Tidal Freshwater Emergent Wetland |  Alkali Seasonal Wetland Complex |  Inland Dune Scrub |
|  Valley/Foothill Riparian |  Vernal Pool Complex |  Cultivated Land |
| |  Managed Wetland |  Developed |



*Surface impacts are not expected to result from subsurface features. **In-river features are not a permanent impact to navigation.

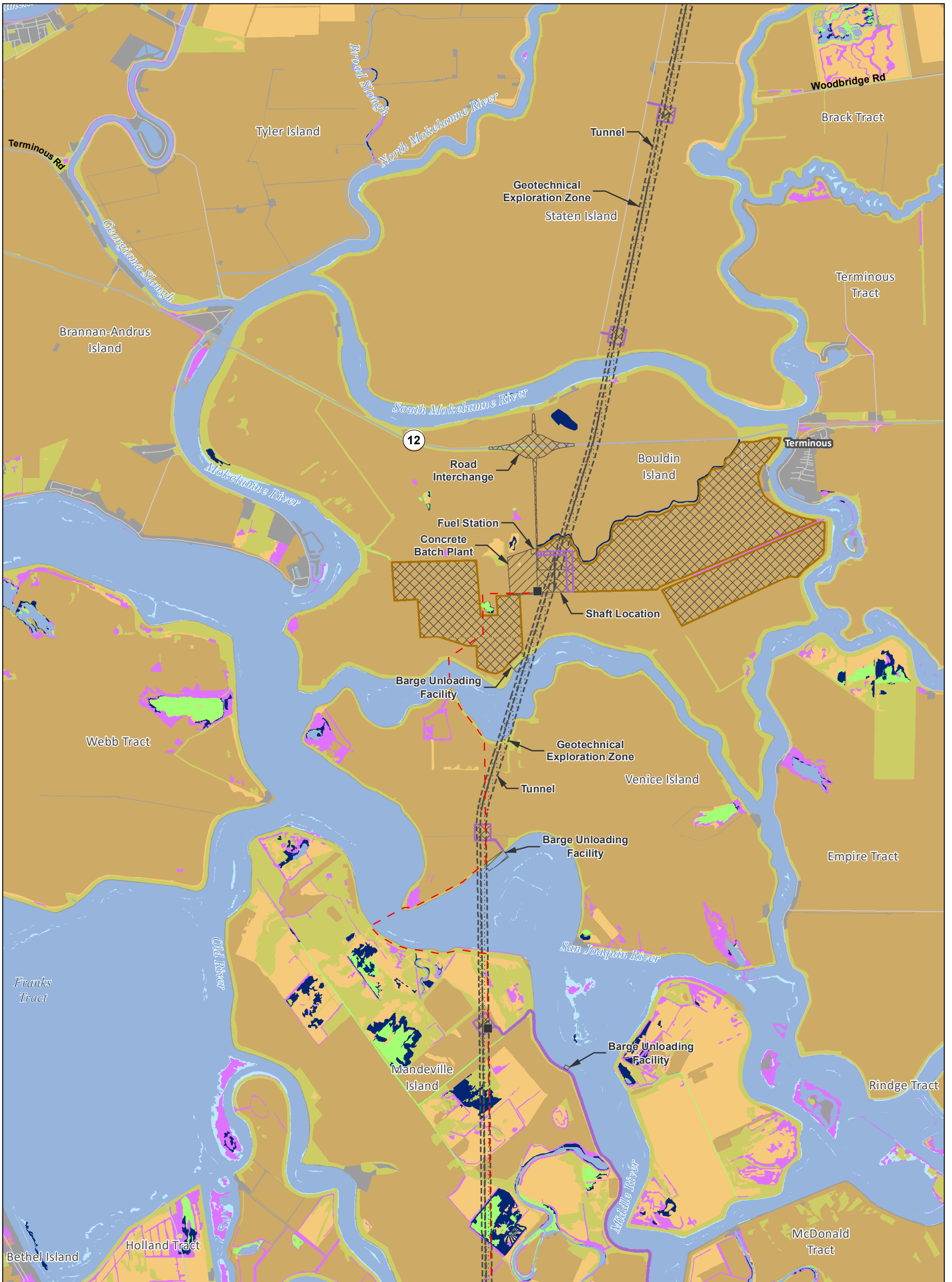


S:\RDEIR_EIS_Recirc\Appendix_Mapbooks\EIREIS_BTf_48K_Mapbook_SDE.mxd 2018529

Sources: DWR CWF Engineering (rev 1e 2018); NAIP 2016); Natural Communities, ICF 2018

Figure M12-4: Sheet 2 of 6
Distribution of Natural Communities — Proposed Project

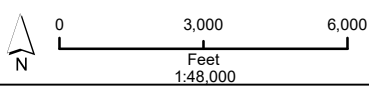
DRAFT: 29 May 2018



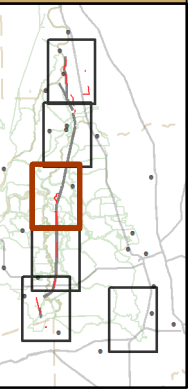
Refer to mapbook index page for conveyance construction footprint symbology

Legend

- | | | |
|-----------------------------------|--|--------------------------------|
| Tidal Perennial Aquatic | Nontidal Perennial Aquatic | Other Natural Seasonal Wetland |
| Tidal Brackish Emergent Wetland | Nontidal Freshwater Perennial Emergent Wetland | Grassland |
| Tidal Freshwater Emergent Wetland | Alkali Seasonal Wetland Complex | Inland Dune Scrub |
| Valley/Foothill Riparian | Vernal Pool Complex | Cultivated Land |
| | Managed Wetland | Developed |



*Surface impacts are not expected to result from subsurface features. **In-river features are not a permanent impact to navigation.

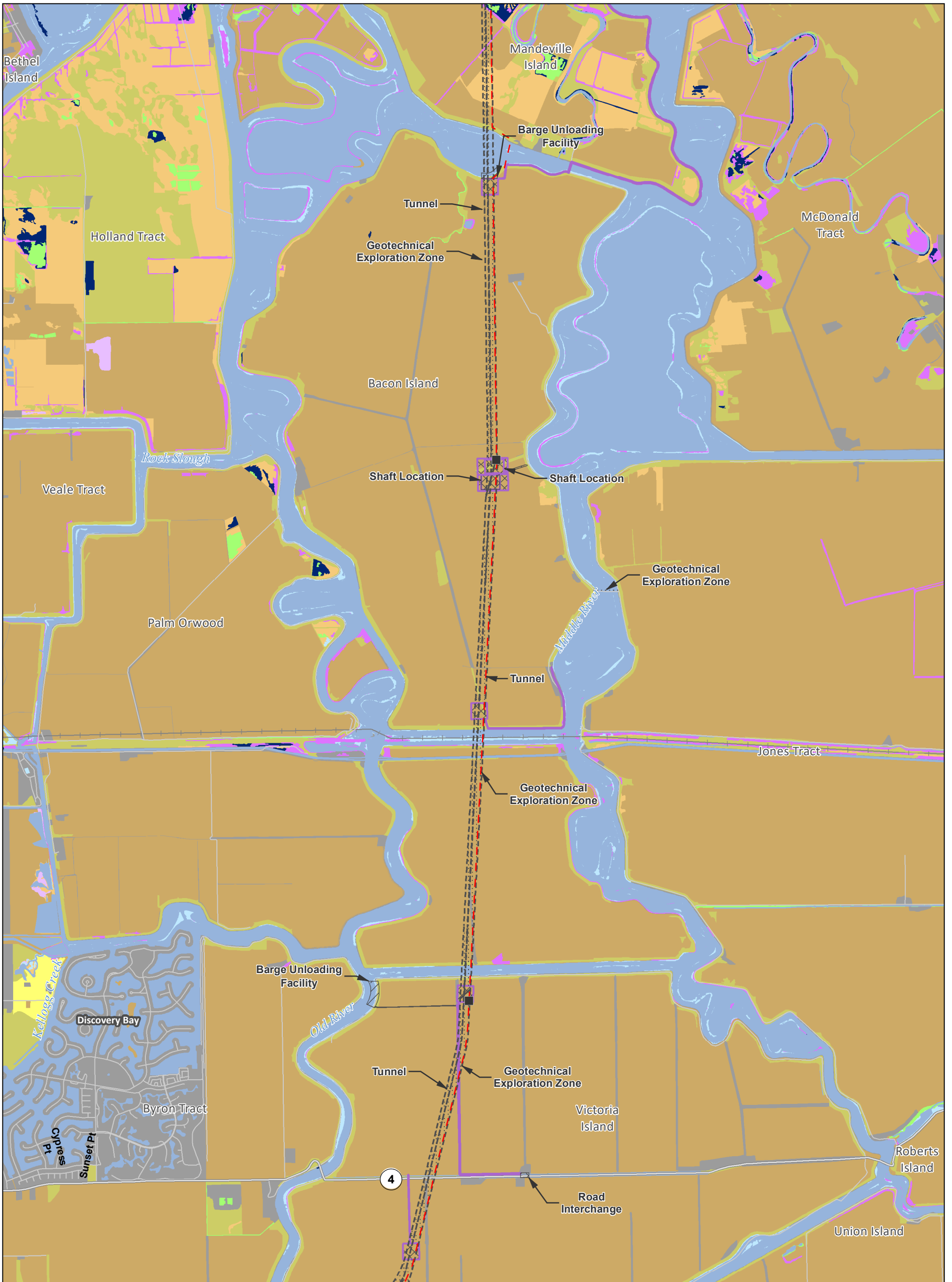


S:\RDEIR_EIS_Recirc\Appendix_Mapbooks\EIREIS_BT_48K_Mapbook_SDE.mxd 20180529

Sources: DWR CWF Engineering (rev 1e 2018); NAIP 2016); Natural Communities, ICF 2018

**Figure M12-4: Sheet 3 of 6
Distribution of Natural Communities — Proposed Project**

DRAFT: 29 May 2018

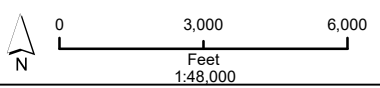


Refer to mapbook index page for conveyance construction footprint symbology

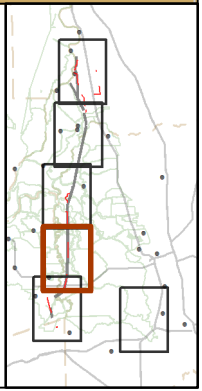
Legend

Natural Community

- | | | |
|-----------------------------------|--|--------------------------------|
| Tidal Perennial Aquatic | Nontidal Perennial Aquatic | Other Natural Seasonal Wetland |
| Tidal Brackish Emergent Wetland | Nontidal Freshwater Perennial Emergent Wetland | Grassland |
| Tidal Freshwater Emergent Wetland | Alkali Seasonal Wetland Complex | Inland Dune Scrub |
| Valley/Foothill Riparian | Vernal Pool Complex | Cultivated Land |
| | Managed Wetland | Developed |



*Surface impacts are not expected to result from subsurface features. **In-river features are not a permanent impact to navigation.

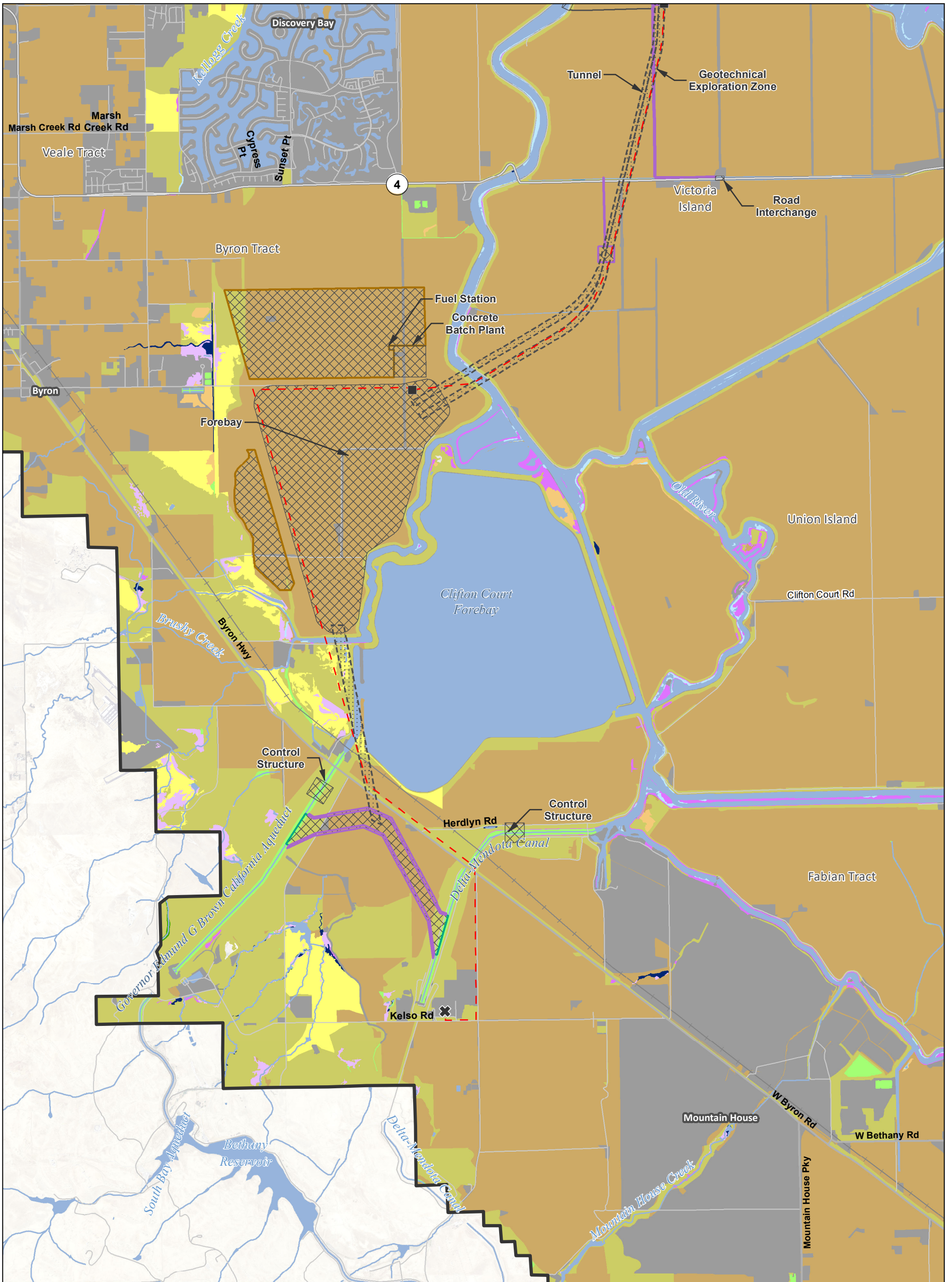


S:\RDEIR_EIS_Recirc\Appendix_Mapbooks\EIREIS_BTf_48K_Mapbook_SDE.mxd 20180529

Sources: DWR CWF Engineering (rev 1e 2018); NAIP 2016); Natural Communities, ICF 2018

Figure M12-4: Sheet 4 of 6
Distribution of Natural Communities — Proposed Project

DRAFT: 29 May 2018

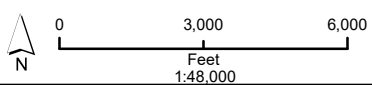


Refer to mapbook index page for conveyance construction footprint symbology

Legend

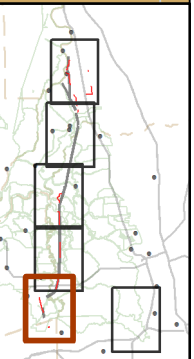
Natural Community

- | | | |
|-----------------------------------|--|--------------------------------|
| Tidal Perennial Aquatic | Nontidal Perennial Aquatic | Other Natural Seasonal Wetland |
| Tidal Brackish Emergent Wetland | Nontidal Freshwater Perennial Emergent Wetland | Grassland |
| Tidal Freshwater Emergent Wetland | Alkali Seasonal Wetland Complex | Inland Dune Scrub |
| Valley/Foothill Riparian | Vernal Pool Complex | Cultivated Land |
| | Managed Wetland | Developed |



*Surface impacts are not expected to result from subsurface features.

**In-river features are not a permanent impact to navigation.

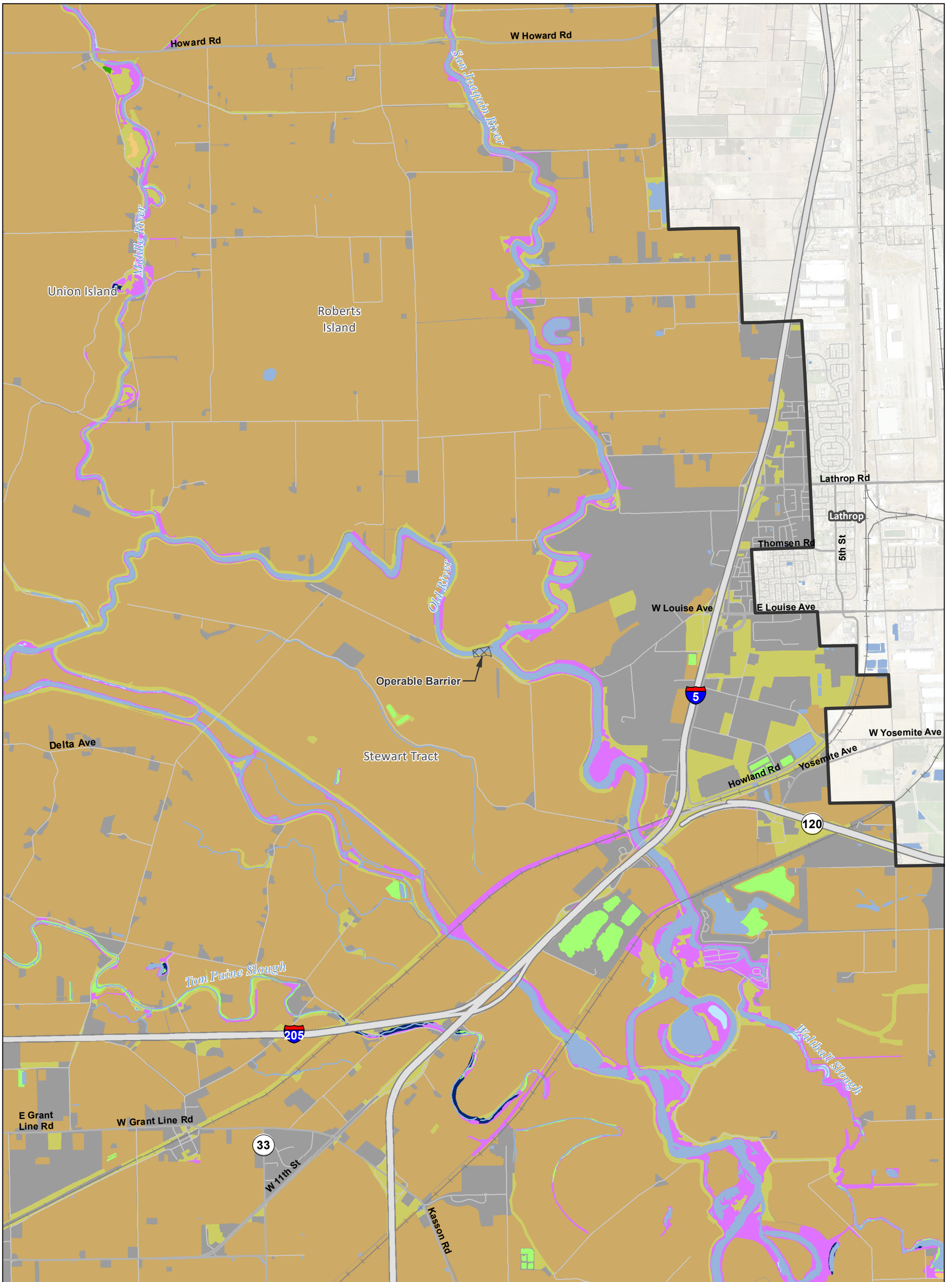


S:\RDEIR_EIS_Recirc\Appendix_Mapbooks\REIRIS_BTf_48K_Mapbook_SDE.mxd 20180529

Sources: DWR CWF Engineering (rev 1e 2018); NAIP 2016); Natural Communities, ICF 2018

Figure M12-4: Sheet 5 of 6
Distribution of Natural Communities — Proposed Project

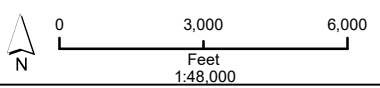
DRAFT: 29 May 2018



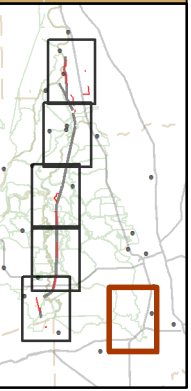
Refer to mapbook index page for conveyance construction footprint symbology

Legend

- | | | |
|-----------------------------------|--|--------------------------------|
| Tidal Perennial Aquatic | Nontidal Perennial Aquatic | Other Natural Seasonal Wetland |
| Tidal Brackish Emergent Wetland | Nontidal Freshwater Perennial Emergent Wetland | Grassland |
| Tidal Freshwater Emergent Wetland | Alkali Seasonal Wetland Complex | Inland Dune Scrub |
| Valley/Foothill Riparian | Vernal Pool Complex | Cultivated Land |
| | Managed Wetland | Developed |



*Surface impacts are not expected to result from subsurface features. **In-river features are not a permanent impact to navigation.



S:\RDEIR_EIS_Recirc\Appendix_Mapbooks\I\REIS_BTf_48K_Mapbook_SDE.mxd 2018529

Sources: DWR CWF Engineering (rev 1e 2018); NAIP 2016); Natural Communities, ICF 2018

**Figure M12-4: Sheet 6 of 6
Distribution of Natural Communities — Proposed Project**

DRAFT: 29 May 2018